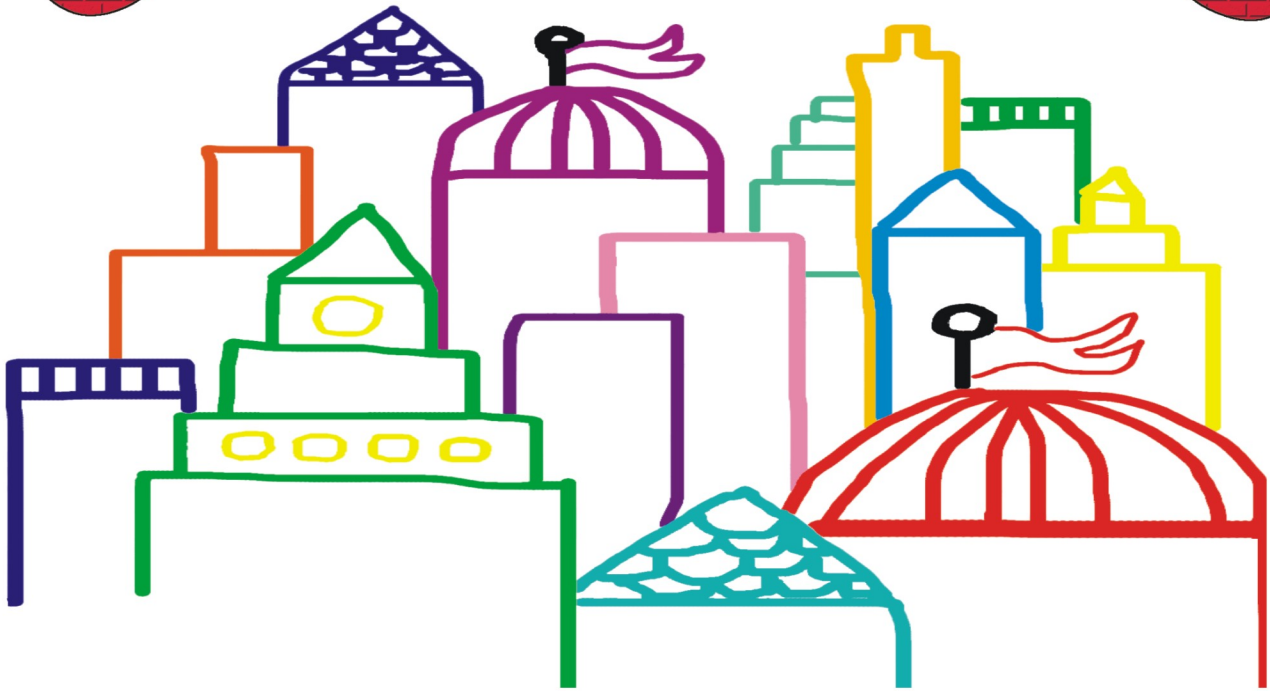


CITYSCAPES



CITYSCAPES

Grade 3 - 5



MATERIALS: Heavy white 8" x 10 ½" paper (provided by OWY), pencils, erasers, black Sharpie markers (fine and ultra-fine tips), colored markers, black crayons, examples of cityscapes and project examples

TEACHER INPUT:

Define "cityscape" - Painting or drawing of things found in a city; such as buildings and streets. Discuss the differences between the sites seen in cityscapes and the sites in a more rural setting.

Discuss and view artwork depicting cityscapes with students. Excellent examples might be: Pittsburgh Memories by Romare Bearden, Cliff Dwellers by George Wesley Bellows, Rainy Night by Charles E. Burchfield and New York, New York by Gene Steffen.

Provide project examples and materials. Discuss with students how size, detail, overlapping and placement will create depth in their cityscape. Demonstrate different techniques to show depth on the board. Discuss what shapes would be appropriate for cityscapes. Discuss how shapes can be used together to create interesting buildings.

PROCEDURE:

- 1) **Students should design cityscapes of their own, lightly in pencil, using basic shapes.** Remember to reserve space for a border (lightly block off ½" to a full inch all the way around the edge of the paper).
- 2) **Designs, doors and windows should be added to buildings as desired.** Remind students that images should get smaller as the buildings go back.
- 3) **Once a successful design has been completed, trace over the final design lines using black marker.** Pencil lines should not be visible on the finished artwork.
- 4) **Create a design for the border.** The design should represent the sky (stars, curvy lines, spirals, clouds, etc...). It may be helpful to practice border ideas on scrap paper first.
- 5) **Once the border images have been successfully drawn on the artwork, these too should be outlined with black marker.**
- 6) **Color the central and border images in with colored markers.** Stress the use of bright bold colors.
- 7) **The background in the central image should be colored with black crayon.** Students should not press too hard when coloring with the crayon - make sure that the marker outline of star and buildings is still visible.

Idea submitted by: Nicole Foreman Adaway - Art Educator at Henry Heights, LA
1998 Prism Award Winner - Original Works