

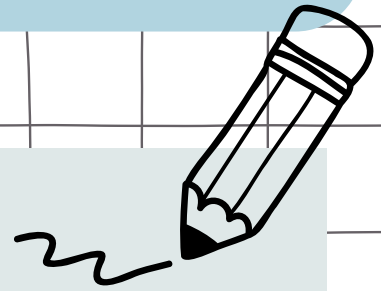
# Butterfly Quilt



Grade: 2-4

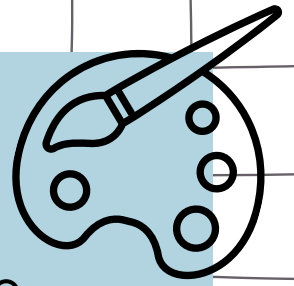
Time: 1 Class

## Materials



- 8 1/2" x 11" white art paper
- Original Works art paper
- Glue
- Scissors
- Fine tip black marker
- Sample project

# Instructions:



- Cut colored construction paper into strips approx. 3/4" wide and paste around the edges of your heavy white paper to create a frame
- Using black construction paper, cut out one large butterfly
- Open the butterfly and glue it securely to the middle of the paper
  - Allow room for antennae. Create antennae from small strips of construction paper
  - Add small circles at the top
- Cut designs from construction paper to fill in the wings. The more the better.
  - Use a variety of shapes and make both wings similar in design
  - Glue all the construction paper pieces firmly in place
- Consider pasting a small shape into each of the corners. Stars, diamond, or triangles would all look great!

# Instructions:

- **IMPORTANT:** Adding stitch lines will turn this piece into a quilt design
  - Practice using small strokes in a row leaving a little space between each mark
  - A black fine tip marker is the perfect tool to use for the stitch lines; the more stitches the better!
- To create wavy lines in your border use a fine guideline that can be covered over, erased, or brushed away (white chalk works very well)
- Sign your name or use your initials. Try and do so using “stitch” lines. Adding the year can also be a nice touch

