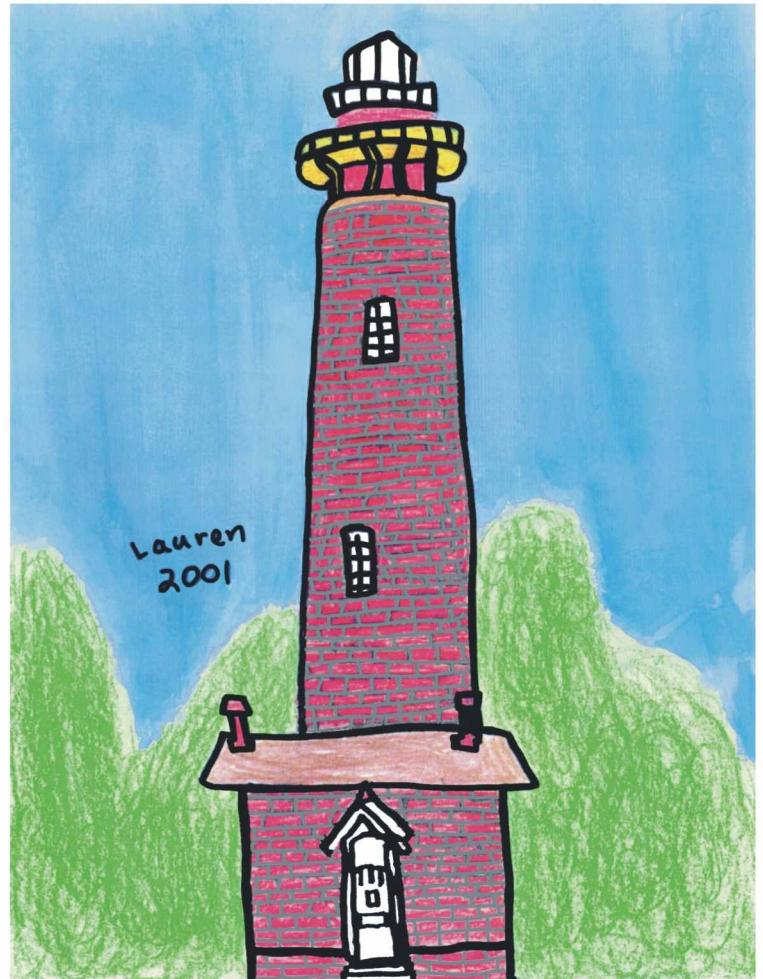
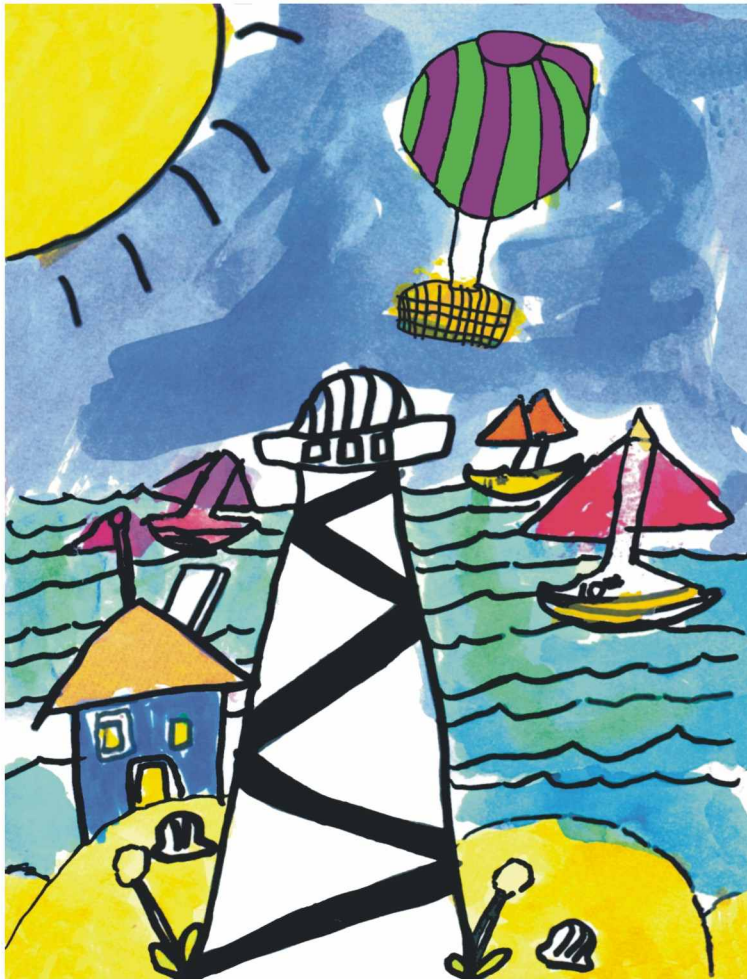
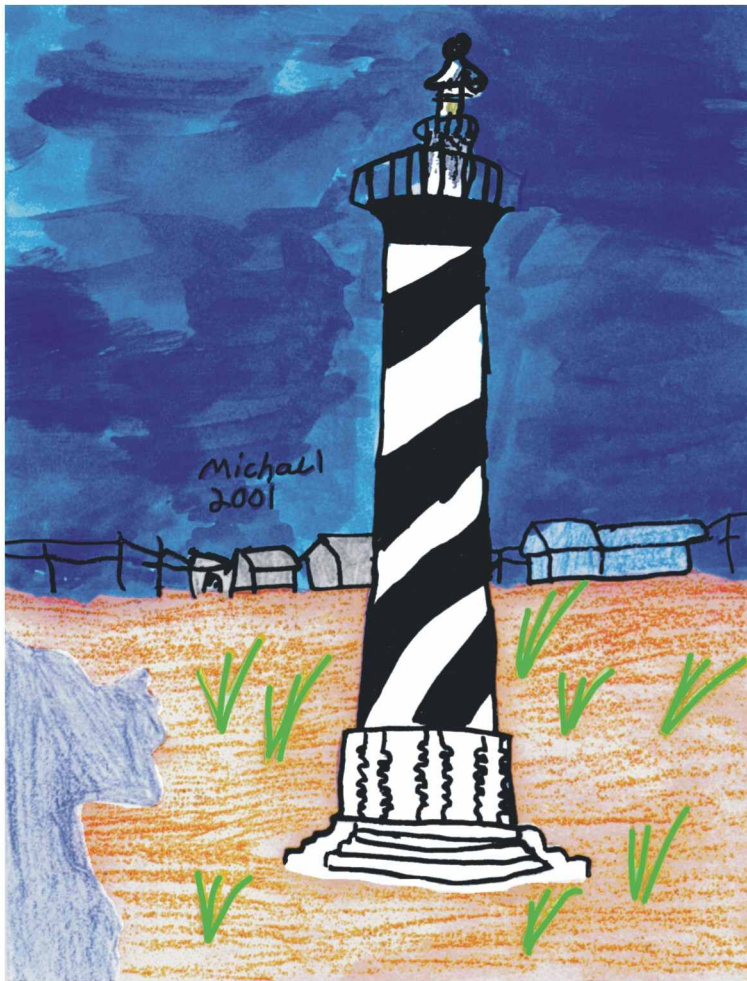


# Lighthouses of North Carolina



# LIGHTHOUSES OF NORTH CAROLINA

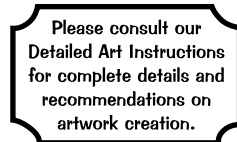
Grade 4

Time: Four, 45 minute classes

**Objective:** To draw a lighthouse and the surrounding area, found in North Carolina. Work on perspective and the use of a ruler to draw straight lines.

**Resources:** [Exploring the LightHouses of North Carolina](#) by Cindy Corey

**Material:** sketch paper • heavy white paper • pencils  
tape • fine point black markers • crayons  
watercolor • tempera paint



**Enrichment:** Have students research and do a report on the lighthouse they choose, including where it is located, why and if it's still in operation.

Have color copies of lighthouses on display. Provide each student with a color copy of the lighthouse they have chosen to use as a reference. As students do their initial sketches, read the history of lighthouses from the resource book.

- 1) Have students do a sketch of the lighthouse they chose, including the background, to the best of their ability on the sketch paper.
- 2) When the sketch has been finished and approved, have th students turn their sketch into carbon paper by covering the reverse side of the sketch in pencil (this must be VERY DARK). Attach the sketch to the heavy white paper, tape together, and have th students bear down and trace over their pencil lines to transfer the drawing. The students love this part! When the transfer has been completed - gently remove the tape and discard the original sketch.
- 3) Students should now color in the lighthouse with crayon or colored pencil. Trace over the lines with fine point black markers. Paint the sky with the watercolor or tempera paints. Suggest students paint th esky like a sunset, sunrise, night or with a rainbow.

Submitted by: Margaret Scully - Art Instructor for Pinehurst Elementary, Pinehurst, NC