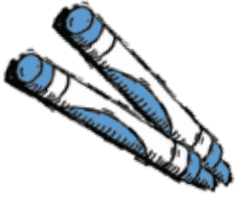


Art Instructions

Creating GREAT art is the first step to a successful program.

For best results we recommend...

Crayons • Watercolors • Markers • Tempera Paints • Photos • Paper Collages



Be sure that students press hard for a rich color!



Bright bold colors will look great. Just go easy on the water.



For best results, fill the entire paper edge-to-edge.



Black is great for outlining. Just please no fluorescents!



Intense/bold colors reproduce best. Use caution with the amount of paint, as it can crack and crumble.



We suggest that you avoid using:

- Glitter of any kind** – no glitter crayons, markers, glue or paint. No sprinkled glitter
- Fluorescent, brights and metallics**
- Trademark or copyright** images or logos. This includes brand names, emojis, video game/cartoon characters, stickers, magazines/newspaper prints
- Abrasives** such as salt or sand
- 3D art** – items including: cotton balls, feathers, yarn, foam or googly eyes
- Scratch art**
- Poor quality construction paper**. This does not reproduce true to color

Helpful Art Tips

Please follow these simple tips to create great art for lasting memories.



Handprint Art:

When creating hand-print art, fill the entire sheet with color or add an exciting background.



Paper Collages:

Be sure to securely glue everything. We don't want a roof to fall off a house while it's being shipped here!

Oil Pastels & Chalk:

If you do choose to use them, please do so with caution and they **MUST be sprayed with a fixative such as Krylon #1311 Matte Fixative**. A great way to check is by placing your hand on them. Does color come off or does it feel sticky, if so, we will not be able to process them.

Colored Pencils & Crayons

Remind artists to press down hard when using these. Darker, bold colors reproduce best.



Borders:

Add a border for fun & interest. 1" wide is best, and helps your artists to keep details away from the edge.

Keep important details (such as names, dates, heads, and bird beaks) **at least 1"** from the edge of the paper or they may be cut off during production of your products.

Art Paper:

- Paper should be 8 ½" x 11". We recommend a paper weight of 60-70#
- Construction paper. While it can enhance an art project, construction paper often does not reproduce true to color. Blues can look purple, blacks can be green, etc.

Avoid "playing on the edge." What exactly does that mean?

- Keeping details such as names, date etc. away from the edge. During reproduction items that are within 1" from the edge could be trimmed. This is especially true on our full bleed products (key chains, tiles, mouse pads...)
- If pencil guide is drawn, be sure that it is completely erased, otherwise it will appear on finished products.

For more details and examples visit www.originalworks.com/artwork