

# **BACKGROUNDS &**

# **BORDERS**

## **BACKGROUNDS & BORDERS**

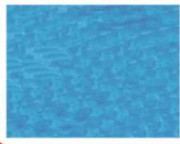
**can be a fabulous way to  
enhance any piece of art.**

**BACKGROUNDS provide a great base  
for even the simplest of art projects.**

**Your background can be simple  
or much more involved depending  
upon the artist's ability.**

**BORDERS offer a wonderful way  
to put that perfect finishing touch  
to your masterpiece. You can use  
anything from an elegant plain border  
to a decorative or whimsical border.**

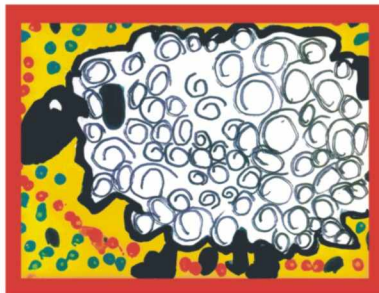
**Please refer to the following pages  
to view samples of artwork  
using BACKGROUNDS & BORDERS.**



- 1) Choose the technique for your background. We used heavy white paper and blue paint - using different brush strokes to give the appearance of moving water.
- 2) The fish and plant life was colored and cut out from a separate piece of paper and firmly affixed with glue to our "water" background.
- 3) Black construction paper was cut into  $\frac{3}{4}$ " strips to serve as our border. Attach firmly with glue.
- 4) Don't forget to sign your masterpiece at least  $\frac{1}{2}$ " away from the paper edge in a contrasting color.

Please consult our Detailed Art Instructions for complete details and recommendations on artwork creation.

**Broad simple borders make a great visual impact!**

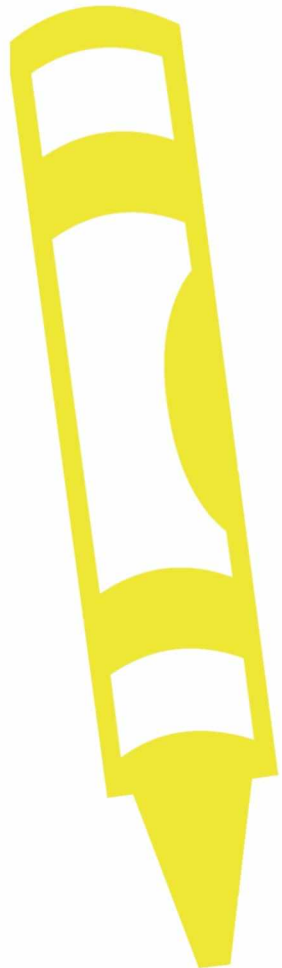


**BORDERS can be a very important part of a lesson plan. When selecting a border technique, you should consider the complexity, subject matter, media and color usage of the main part of the artwork.**

**Plan ahead, if you know your students will be using borders. Make guidelines leaving an appropriate amount of space for the border style you will be using.**



# Easy watercolor washes can be a beautiful foundation for any piece of art.

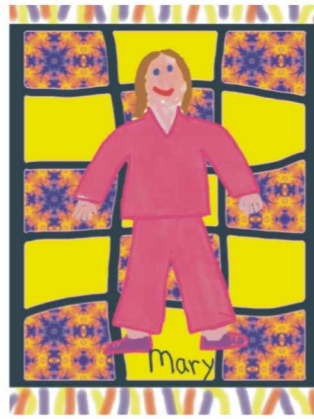


- 1) Divide heavy white paper into four sections to become your hills.

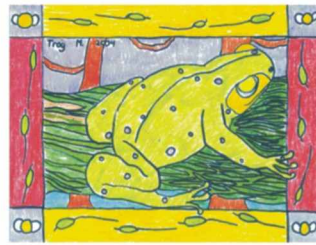
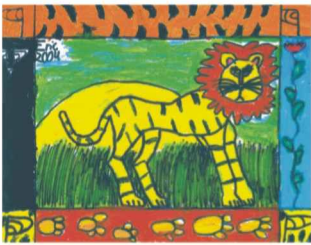
Please consult our Detailed Art Instructions for complete details and recommendations on artwork creation.

- 2) Fill in your "hills" with two different alternating colors. We used two different shades of blue paint. Let this dry completely before continuing to the next step.
- 3) Add houses, trees and cars to your artwork - being sure to follow the contours of your "hills". We used brightly crayons but tempera paint would work as well.
- 4) Splatter a small amount of black paint onto your artwork to look like snow. Don't forget to sign your name to your masterpiece at least ½" away from the paper edge.

Incorporate elements of the main piece of artwork into your border.



Wallpaper samples can be painted on or cut into pieces and glued on for accents.



## Splatter paint



- 1) Randomly color using a single color wax crayon to fill most, but NOT all, of a piece of heavy white paper.
- 2) Paint with black watercolor over the entire page. The crayon will repel the paint. Let dry completely. Trim the page into four equal parts - lengthwise.
- 3) Draw or paint a self-portrait on heavy white paper. If required, let this dry completely before going on to the next step.
- 4) Firmly glue your crayon & watercolor resist border onto your self-portrait. Sign your masterpiece at least 1/2" away from the paper edge with a black marker or another contrasting color.

Please consult our Detailed Art Instructions for complete details and recommendations on artwork creation.

