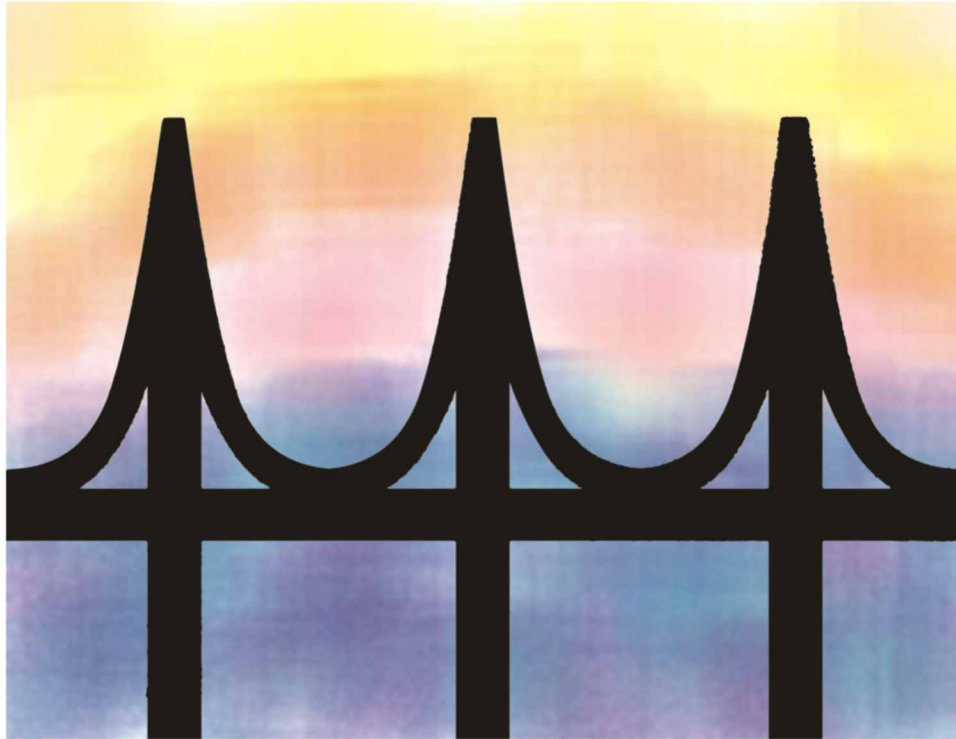


# SHADOW PLAY



# SHADOW PLAY

Time: One to Two 45 minute sessions

**MATERIALS:** heavy white paper  
black paper  
scissors  
watercolor and tempera paints  
various size brushes and/or small sponges  
glue or glue sticks  
fine tip black marker  
pencil  
pictures of sunrise and sunset  
examples of project

Please consult our  
Detailed Art Instructions  
for complete details and  
recommendations on  
artwork creation.

**OBJECTIVES:** The student will create a background resembling the dawn or dusk sky with a "shadow"/silhouette style image as the focal point of the artwork.

**TEACHER INPUT:** Discuss how the colors visible in the sky at sunset or sunrise are affected by the environment. Discuss how man-made structures and nature are seen against a light background. Discuss how silhouettes need a strong and defined outline to make a striking impact.

**NOTE:** It is important to know what your silhouette will represent so that you can plan your "sky" accordingly. It is a good idea to limit the subjects with younger children. Have pictures available to look at for your chosen subjects(s).

## **PROCEDURE:**

- 1) Decide on your silhouette subject. This is important in regards to the orientation of your paper (landscape vs. portrait).
- 2) Apply watercolor/tempera paint for your background. Plan your color usage ahead of time...are you doing a sunrise, sunset or dusk picture? Stress the use of bright colors when possible. Set aside to dry.
- 3) Draw the outline of your silhouette, lightly in pencil, onto your black paper. Be aware of perspective. Draw your silhouette large enough to almost fill the heavy white paper.
- 4) Cut out your silhouette. Be careful to closely follow your pencil lines.
- 5) Glue the silhouette, pencil line side down, onto your background. Sign your masterpiece, well away from the paper edge, with a black fine tip marker. Record, on the back with pencil, the student name, grade, teacher and class.